

LOCATING NEXSAN HARDWARE SERIAL NUMBERS

On Beast Boy and E-Series Storage Systems

Controller serial numbers can be found:

- on the rear of a controller
- by looking in the UI, on the System Information tab:

To find the serial number in the UI, navigate to the **System Information** tab.

The screenshot shows the Nexsan management interface. The 'System Information' tab is selected, displaying a table of system details. The 'Controller serial number' row is highlighted with a red box, showing the serial numbers for Controller 0 and Controller 1.

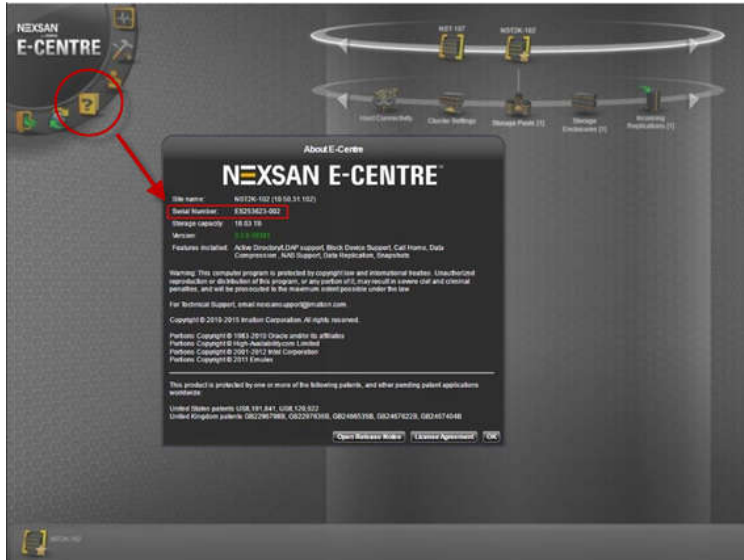
Description	Information	
System	E18	
System ID	06E719F2	
System Mode	All Ports All LUNs	
Active controllers	2	
Enclosure type	Rack, 2U	
Host fibre connection	2 x Dual 16Gb fibre ports	
Host iSCSI connection	2 x Dual 1Gb iSCSI ports	
System Time	Wednesday 26-Oct-2016 16:37:33	
Description	Controller 0	Controller 1
Controller status	Up (Master)	Up (Slave)
Controller up time	294 Days, 22 Hours, 09 Mins, 49 Secs	16 Days, 19 Hours, 24 Mins, 49 Secs
Firmware revision	R011.1204	R011.1204
Boot Loader revision	V29C	V29C
Emergency revision	R011.1020	R011.1020
Controller serial number	009402E7182E	009402E71C83
Cache	3840 MB, Enabled, Mirrored, FUA ignored	3840 MB, Enabled, Mirrored, FUA ignored

On UNITY and NST Systems

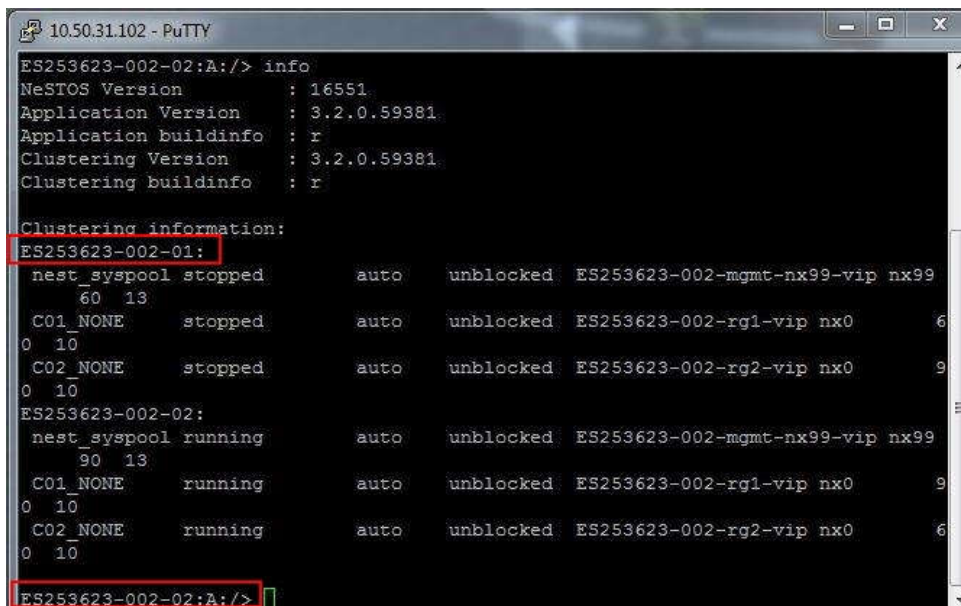
UNITY/NST System IDs (serial numbers) can be found:

- on the rear of a controller
- by looking in the UI
- by using SSH

To find the serial number in the UI, navigate to **Help > About E-Centre**.



To use SSH:



On Assureon Systems

The Assureon serial number can be found:

- by looking in the UI, on the System State tab
- on the chassis

To locate the serial number in the UI navigate to **System State > Domain**.

The screenshot shows the Nexsan Assureon web interface. The 'System State' tab is active, and the 'Domain' section is highlighted with a red box. The domain name is 'ASU246095'. Below this, there are several sections: 'Statistics', 'CPU & Memory', 'Folders', 'Services', 'Ingestion', and 'Hardware'. The 'Statistics' section shows various metrics for different sites and folders. The 'CPU & Memory' section shows memory usage at 47% and CPU usage at 4%. The 'Folders' section shows 'F001-246095' and 'F001-246095 Ingestion'. The 'Services' section shows 'F001-246095 Ingestion' as 'Enabled'. The 'Hardware' section shows various components like DIMM, Disk, Fan, Processor, and PSU, all with 'Ok' status.

To locate the serial number on the chassis look for something similar to the following:

